



# ŠTO JE AQUAFIRE®? WHAT IS AQUAFIRE®?

**Aquafire®** je vlaknima ojačana lagana cementna vodo i vatrootporna ploča.  
**Aquafire®** je jednostavan i lak suhomontažni sustav.  
**Aquafire®** je siguran za rad i korištenje garantiran CE oznakom po UNI EN 12467:2007.

**Aquafire®** is a fibre-reinforced lightweight cement board water and fire resistant.  
**Aquafire®** is a simple and easy dry construction system.  
**Aquafire®** is safe and guaranteed by CE mark in according to the UNI EN 12467:2007.

|                                 |                                     |   |  |
|---------------------------------|-------------------------------------|---|--|
| <h1>AQUAFIRE</h1>               |                                     |   |  |
| Product code / Codice Prodotto  |                                     | Lot Number / Production Date<br>N° Lotto / Data Produzione  |  |
| <b>F03150030</b>                |                                     | <b>17/04/2013</b>   |  |
| Length (mm)<br>Lunghezza (mm)   |                                     | EN 12467:2007   | A flat sheet of Fiber-reinforced lightweight concrete<br>indoor and outdoor      |
| <b>2000</b>                     |                                     |   | Lastra in cemento alleggerito fibrorinforzato<br>per ambienti interni ed esterni |
| Width (mm)<br>Larghezza (mm)    |                                     | <b>Euroclass / Euroclasse: A1</b>   |  |
| <b>1200</b>                     |                                     | <b>NT</b>   |  |
| Thickness (mm)<br>Spessore (mm) | N° Pezzi pallet<br>Pieces/Packaging | <b>CLASSE 1</b>   |  |
| <b>12,5</b>                     | <b>50</b>                           | <b>CATEGORIA A</b>  |  |
|                                 |                                     | Bifire® s.r.l.<br>Sede Legale via Carducci 8 - Milano - 20123 (MI)<br>Sede Operativa via Lavoratori dell'Autobianchi 1 - Desio - 20832 (MB)<br>Telefono +39 0362-364570 - Telefax +39 0362-334134<br>Internet www.bifire.it - E-mail bifire@bifire.it<br>Partita IVA 03645510961 Capitale Sociale € 600.000,00 i.v.<br>Registro Imprese Monza Brianza n° 03645510961 - N°REA CCIAA MI 1964336 |  |



## ZAŠTO AQUAFIRE<sup>®</sup>?

WHY AQUAFIRE<sup>®</sup>?



**VIŠE VODOOTPORNOSTI**

*MORE WATER RESISTANT*



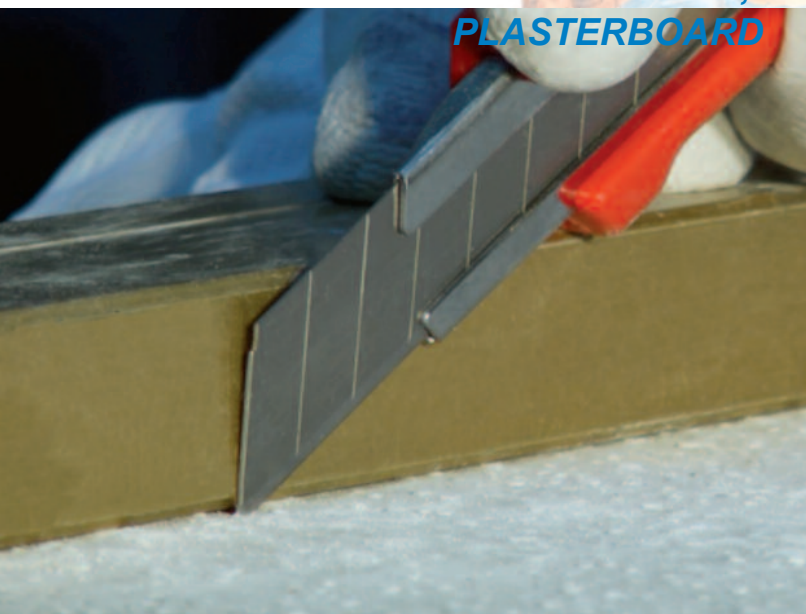
**VIŠE OTPORNOSTI NA POŽAR,**

*MORE FIRE RESISTANT, CERTIFIED UP TO 240  
MINUTI*



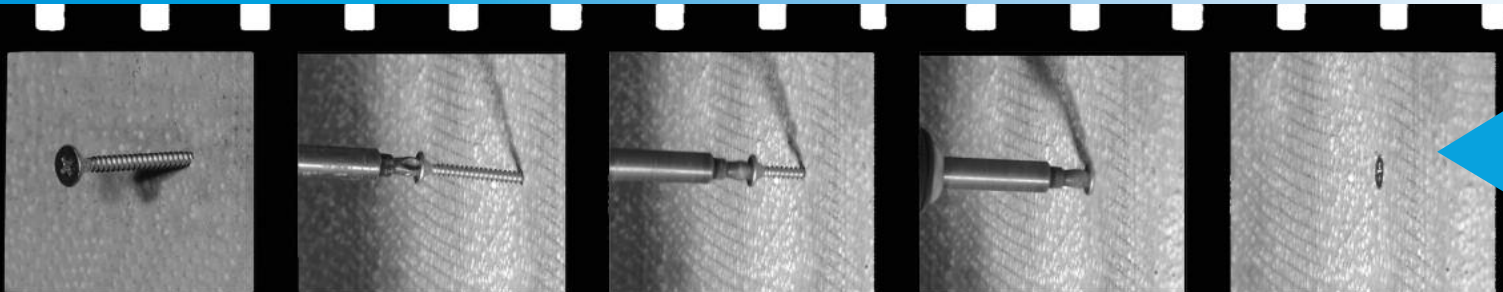
**JEDNOSTAVNIJE REZANJE,  
KAO GIPSKAROTNSKE  
PLOČE**

*EASIER TO CUT, LIKE  
PLASTERBOARD*

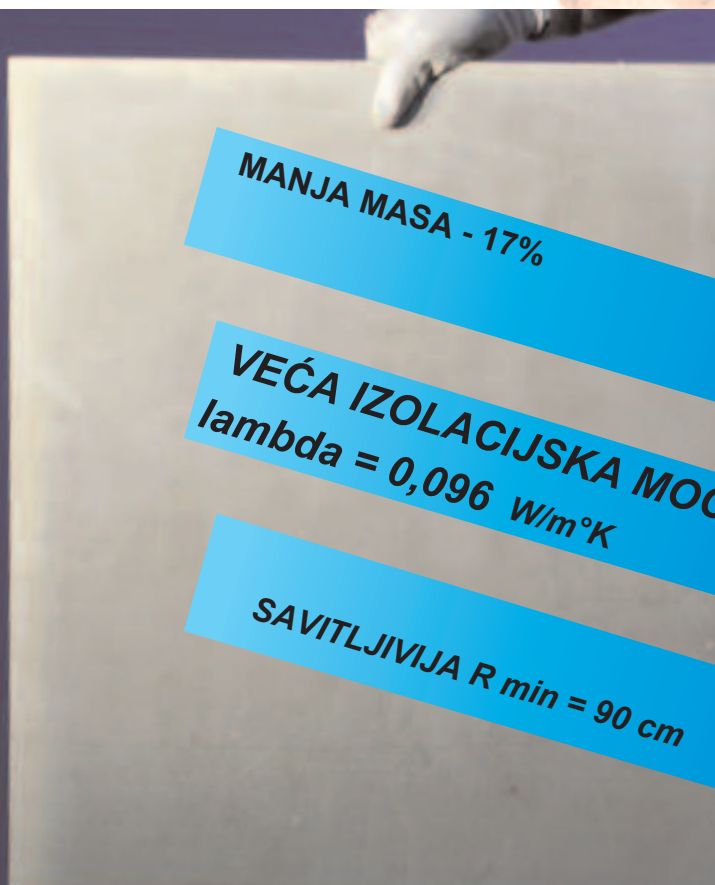




## ZAŠTO AQUAFIRE<sup>®</sup>? WHY AQUAFIRE<sup>®</sup>?



**JEDNOSTAVNIJE PRIČVRŠĆIVANJE ,  
KAO GIPSKARTONSKE PLOČE**  
*EASIER TO SCREW, LIKE PLASTERBOARD*



**MANJA MASA - 17%**

**VEĆA IZOLACIJSKA MOĆ**  
 $\lambda = 0,096 \text{ W/m}^{\circ}\text{K}$

**SAVITLJIVIJA R min = 90 cm**



## GDJE KORISTITI AQUAFIRE<sup>®</sup>? WHERE AQUAFIRE<sup>®</sup>?



Prostori sa povećanom vlagom

*Humidity risk ambient*

Wellness centri

*Spa*

Bazeni

*Swimming pools*

Površine sa rizikom od  
prokišnjavanja

*Infiltration risk surface*





# GDJE KORISTITI AQUAFIRE®? WHERE AQUAFIRE®?



## Garaže

Box

## Podrumi

Cellars / Winery

## Izrada polica u valažnim prostorima

*Bookcase in humid ambients*

## Praonice

Laundry



# GDJE KORISTITI AQUAFIRE<sup>®</sup>?

WHERE AQUAFIRE<sup>®</sup>?



Saune

*Saunas*



Turske kupelji

*Turkish baths*



Kade

*Baths*

Tuševi

*Showers*





## GDJE KORISTITI AQUAFIRE<sup>®</sup>? WHERE AQUAFIRE<sup>®</sup>?



**Kuhinjske radne plohe**

*Plans for kitchens*



**Podloga za keramiku**

*Tiles support*

**Tradicionalni podovi**

*Floors*

**Suhi estrih**

*Dry floors*



## GDJE KORISTITI AQUAFIRE<sup>®</sup>? WHERE AQUAFIRE<sup>®</sup>?



Oblaganje kamina

*Fireplaces coating*

Vatrootporne pregrade

*Fireproof partitions*

Oblaganje površina izloženih  
visokim temperaturama

Nosač fotonaponskih panela

*Support for photovoltaic*







## GDJE KORISTITI AQUAFIRE®? WHERE AQUAFIRE®?



**Nadstrešnice**

*Roofs*

**Zakrivljene površine**

*Curved surface*

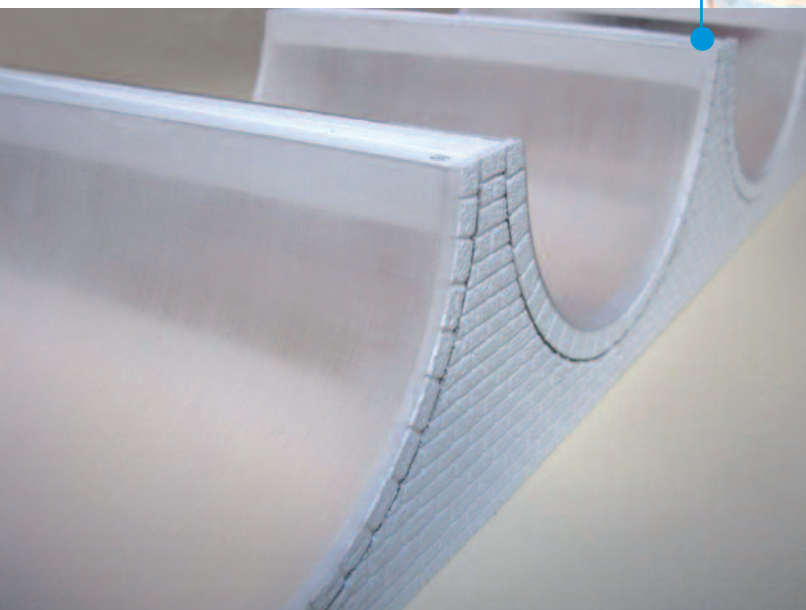


**Verande**

*Verandas*

**Fasade**

*External facade*



## KAKO UGRADITI AQUAFIRE<sup>®</sup>?

HOW INSTALL AQUAFIRE<sup>®</sup> ?

### Vanjska primjena

*Outdoor*

Ploča Aquafire

Vijci Aquafire Star

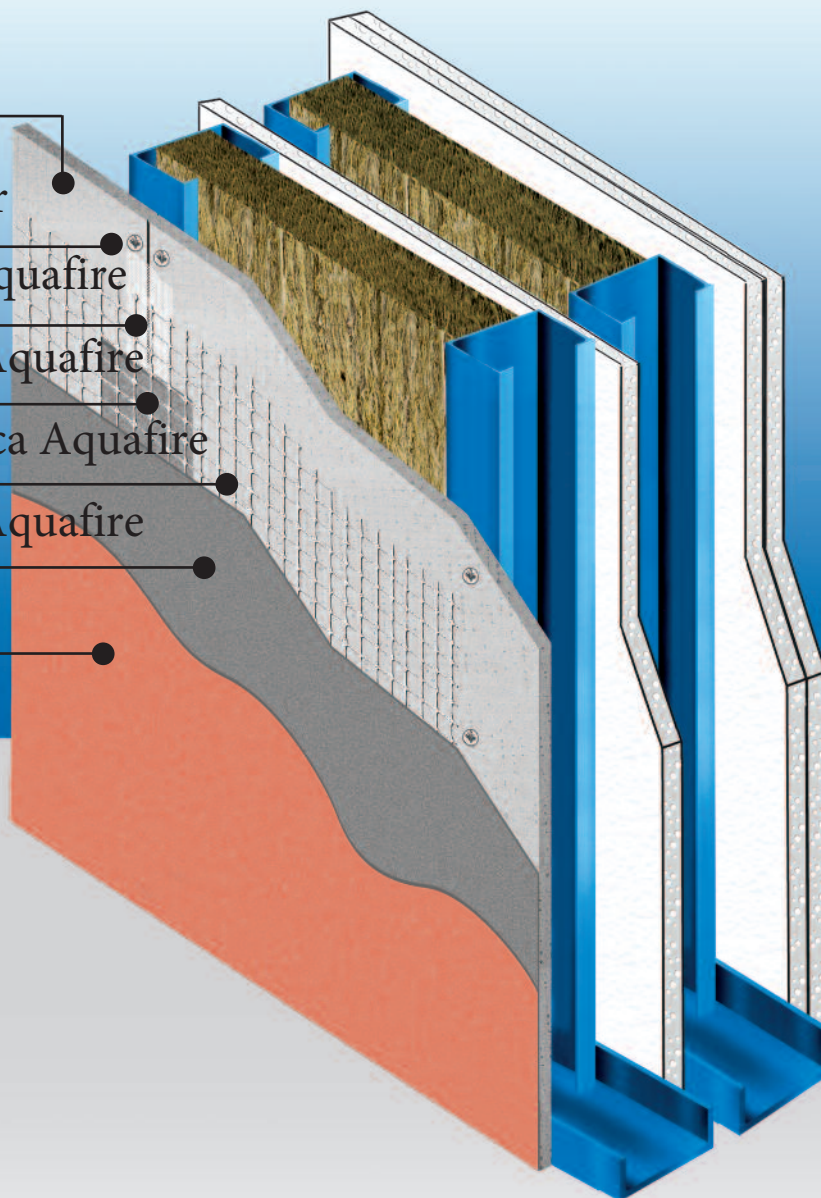
Bandažna traka Aquafire

Masa za gletanje Aquafire

Armaturna mrežica Aquafire

Masa za gletanje Aquafire

Završni sloj



## KAKO UGRADITI AQUAFIRE®? HOW INSTALL AQUAFIRE®?

### Unutarnja primjena

*Indoor*

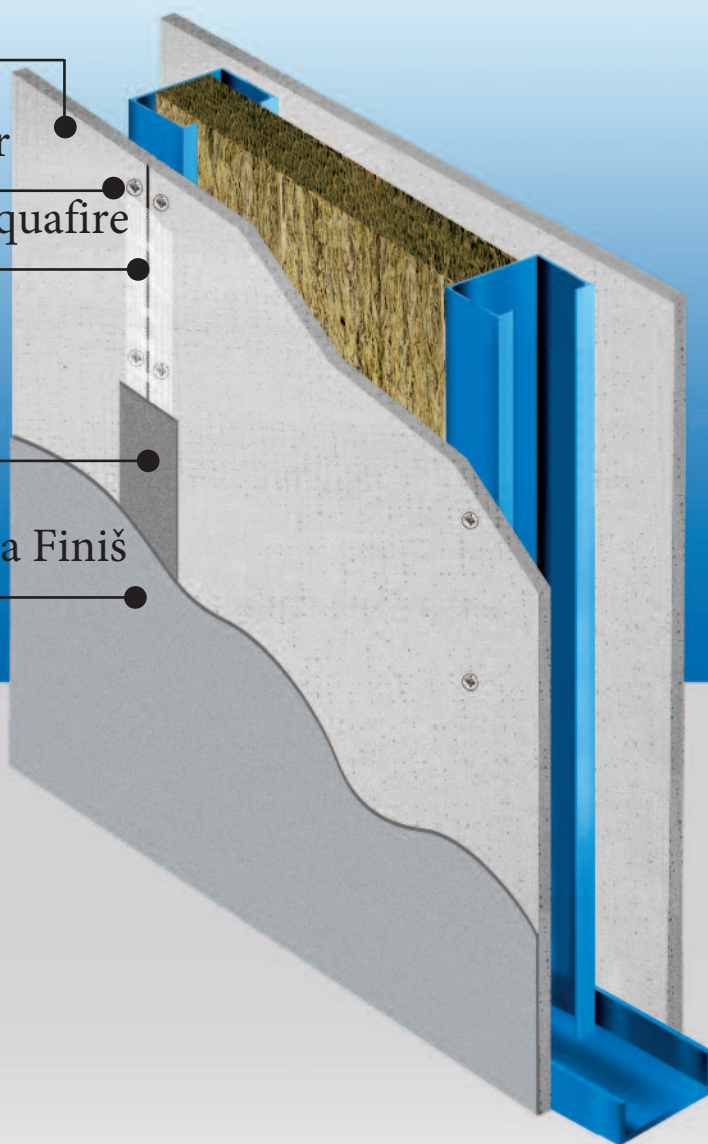
Ploča Aquafire

Vijci Aquafire Star

Bandažna traka Aquafire

Finiš

Površina pogletana Finiš



## KAKO UGRADITI AQUAFIRE<sup>®</sup>?

### HOW INSTALL AQUAFIRE<sup>®</sup> ?

#### Vanjska primjena

1. Ploče postavljamo na prikladnu metalnu potkonstrukciju ovisno o ugradnji na zid, oblogu zida ili stropa ili ventilirane fasade.
2. Preporučamo upotrebu metalnih profila u skladu sa UNI EN normama debljine 1 mm . Galvanizirani sloj mora biti veći ili jednak 200 gr/mq.
3. Međusobni razmak montažnih profila mora biti maksimalno 40cm.
4. Ploče **AquaFire**<sup>®</sup> postavljamo tako da je duža stranica ploče okomita na smjer metalne potkonstrukcije sa stranom koja se reže prema vani , poprečne rezove dodatno zarezati kao kod bilo koje suhomontažne konstrukcije.
5. Između dvije ploče ostaviti razmak pd cca 3-4mm.
6. Preporučamo se ploča ne oslanja direktno na nosivu površinu ( AB pod ili sl.) da bi izbjegli širenje kapilarne vlage ili soli iz nosive podloge
7. Pričvrstite AquaFire<sup>®</sup> ploče AquaFire<sup>®</sup> Star vijcima sa na razmaku od 20 cm ( za horizontalne primjene 15cm) , preporučamo vijke ne postavljati na udaljenosti manjoj od 15 mm od ruba ploče.
8. **Nanijeti sloj mase za gletanje AquaFire na sve horizontalne i vertikalne rubove u širini od 150 mm**
9. U glet masu postaviti AquaFire bandažnu traku širine 75 mm odmah nakon nanošenja mase za gletanje
10. Nakon 12 sati od ispunjavanja spojeva , nanijeti nazubljenim gleterom AquaFire masu za gletanje na čitavu površinu
11. Postaviti AquaFire armaturnu mrežicu čitavom površinom u svježe nanesenu masu za gletanje , ravnom stranom gletera .
12. U ovom trenutku minimalna debljina sloja mase za gletanje bi trebala biti 3 mm.
13. površinu završno obraditi akrilnom ili silikonskom žbukom.

#### Unutarnja primjena

1. Ploče postavljamo na prikladnu metalnu potkonstrukciju ovisno o ugradnji na zid, oblogu zida ili stropa.
2. Preporučamo profile u skladu sa UNI EN normom iz lima debljine 0,6mm.
3. Međusobni razmak montažnih profila mora biti maksimalno 40cm
4. Ploče **AquaFire**<sup>®</sup> uvijek postavljamo tako da je strana za rezanje vidljiva.
5. Između dvije ploče ostaviti razmak pd cca 3-4mm
6. Preporučamo se ploča ne oslanja direktno na nosivu površinu ( AB pod ili sl.) da bi izbjegli širenje kapilarne vlage ili soli iz nosive podloge.
7. Pričvrstite AquaFire<sup>®</sup> ploče AquaFire<sup>®</sup> Star vijcima sa na razmaku od 25 cm ( za horizontalne primjene 15cm) , preporučamo vijke ne postavljati na udaljenosti manjoj od 15 mm od ruba ploče.
8. Nanesite sloj mase za gletanje **Finish** na uzdužne i poprečne fubove , u širino od 100mm.
9. ;U glet masu postaviti AquaFire bandažnu traku širine 75 mm odmah nakon nanošenja mase za gletanje
10. Nakon 24 sata , pregledajte cijelu površinu Finiš masom za gletanje .
11. U ovom trenutku zid je spreman za bojenje .

#### Zakrivljene površine

Za izradu zakrivljenih površina radiusa većeg ili jednakog 2 metra možete koristiti čitavu AquaFire ploču , ukoliko je radius manji od ovog ali ne manji od 90 cm potrebno je koristiti trake od AquaFire ploča širine 30 cm , koje je potrebno učvrstiti na potkostrukciju vijcima AquaFire Star na razmaku od 10 cm.



## KAKO UGRADITI AQUAFIRE®?

### HOW INSTALL AQUAFIRE®?

#### Outdoor

1. The boards will be installed on suitable metallic frames depending on whether the installation is on walls, linings walls, ceiling or ventilated façade.
2. we recommend using metallic profiles in compliance with the UNI EN standard with 10/10mm thickness. The galvanizing must be greater than or equal to 200 gr/m<sup>2</sup>.
3. Arrange the frames one step no greater than 40cm.
4. **AquaFire®** boards must be installed perpendicular to the metallic frame with the cut side exposed. The joints must be staggered as in any normal dry covering application.
5. Between one board and the next leave about 3-4 mm.
6. We recommend not keeping the edge of the board in direct contact with the supporting surface in order to prevent the capillary rise of any humidity, salts or impurities from the supporting surface.
7. Fixing **AquaFire®** boards with Screws AquaFire Star screwing from cut side with step 20cm (15cm for horizontal applications); a distance of about 15 mm is indicated from the edge in order to best take advantage of the boards contact with the large surface of the screw head.
8. Spread a layer of Rasante AquaFire coat on the longitudinal and transversal joints 150 mm wide.
9. Embed the 75 mm Nastro AquaFire mesh for joints in the plaster as soon as it is spread;
10. Once 12 hours have passed after filling the joints, spread a layer of Rasante AquaFire on the entire surface of the boards with a notched trowel steel.
11. Embed the Rete AquaFire mesh in the cement coat which has just been spread, taking care to hide it completely, working with the smooth side of the trowel steel.
12. At this point the final thickness of coating must be 3mm.
13. Complete the surface with a finish plaster walls like acrylic plaster, acrylic-siloxane or siloxane.

#### Indoor

1. The boards will be installed on suitable metallic frames depending on whether the installation is on walls, linings walls or ceiling.
2. we recommend using metallic profiles in compliance with the UNI EN standard with 6/10mm thickness.
3. Arrange the frames one step no greater than 40cm.
4. **AquaFire®** boards must be installed to the metallic frame with the cut side exposed. The joints must be staggered as in any normal dry covering application.
5. Between one board and the next leave about 3-4 mm.
6. We recommend not keeping the edge of the board in direct contact with the supporting surface in order to prevent the capillary rise of any humidity, salts or impurities from the supporting surface.
7. Fixing **AquaFire®** boards with Screws AquaFire Star screwing from cut side with step 25cm (15cm for horizontal applications); a distance of about 15 mm is indicated from the edge in order to best take advantage of the boards contact with the large surface of the screw head.
8. Spread a layer of Finish coat on the longitudinal and transversal joints 150 mm wide.
9. Embed the 75 mm Nastro AquaFire mesh for joints in the plaster as soon as it is spread;
10. Once 24 hours have passed, smoothing the entire surface of the boards with Finish.
11. Now the wall is ready for painting.

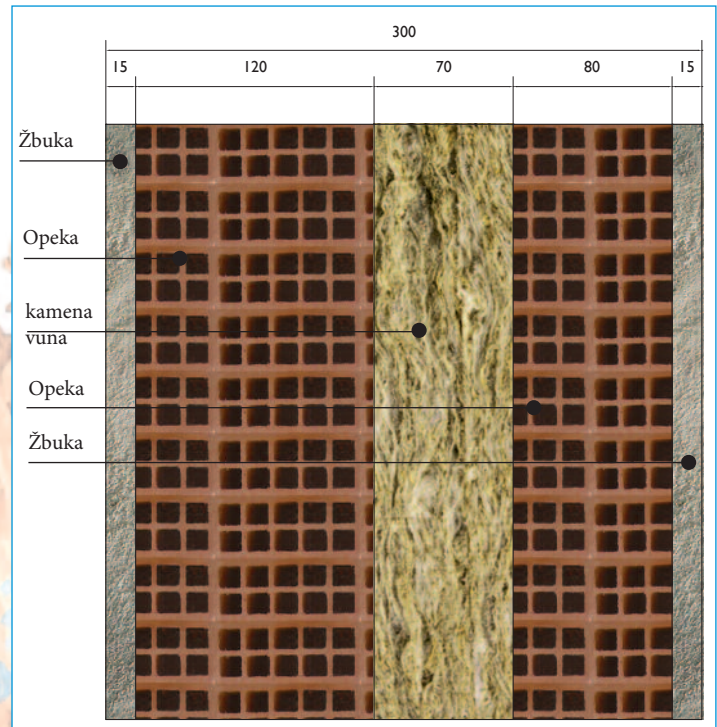
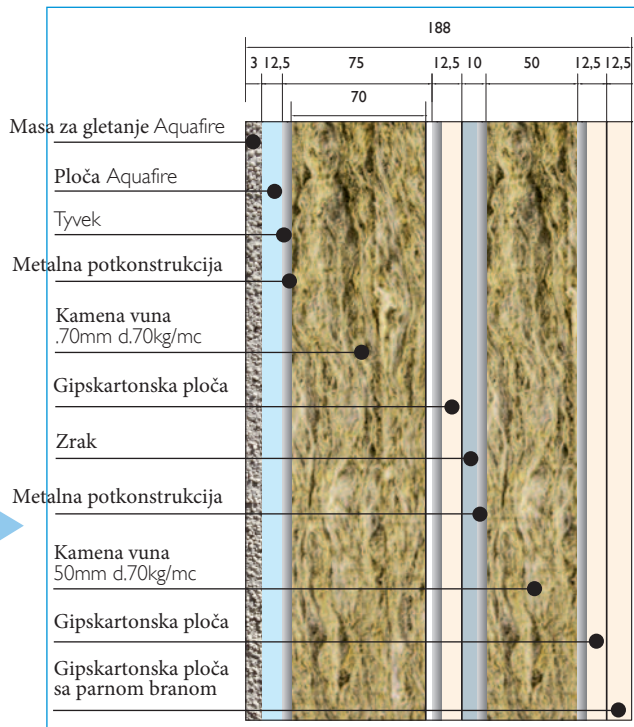
#### Curved surface


To create curved surfaces you can use the whole **AquaFire®** boards up to a minimum radius of 2 meters. For rays less and up to 90cm use boards of a width of 30cm, screwing them to the support with Screws AquaFire Star to step 10cm.

# SUSTAV AQUAFIRE<sup>®</sup> vs. KLASIČNA GRADNJA

## AQUAFIRE<sup>®</sup> SYSTEM vs. TRADITIONAL SYSTEM

### VANJSKI ZID SA DODATNOM IZOLACIJOM



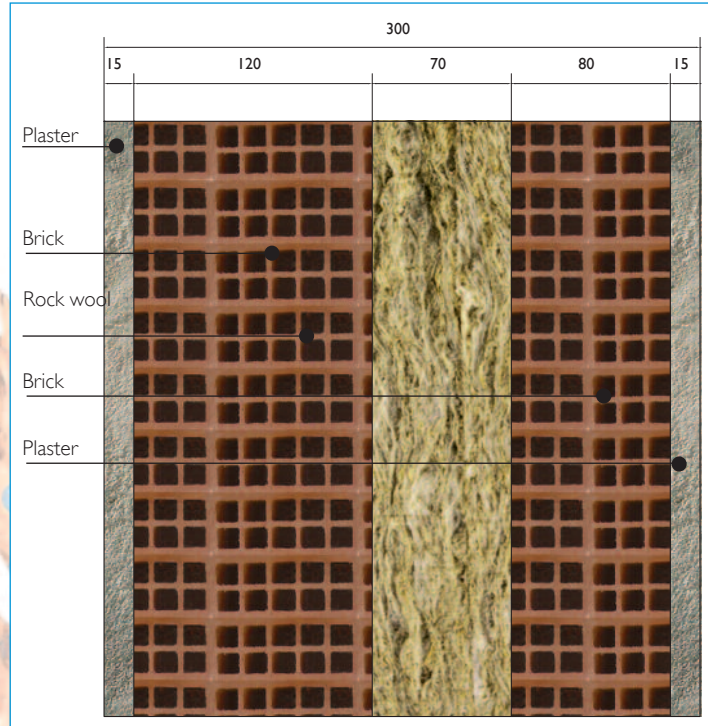
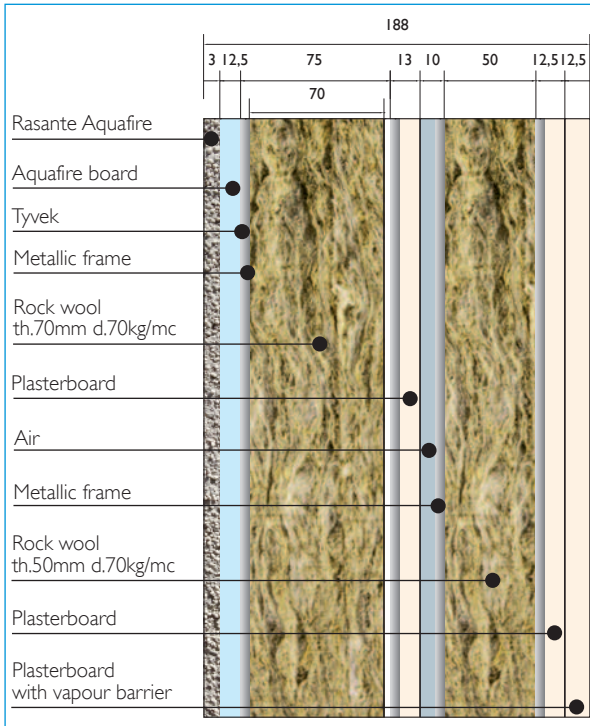
| 188mm   | DEBLJINA  | 300mm  |
|---|---|--|
| <b>0,249 W/m K</b>  | <b>U</b>  | <b>0,380 W/m K</b>   |
| Izrada potkonstrukcije 75mm - postava Tyvek - postava ploče Aquafire - isuna spojeva  | <b>1</b>  | Postava opeke 12cm - postava kamene vune postava opeke 8cm |
| Vanjsko gletanje - izolacija 70/70 - postava GK 1 sloj potkonst. 50mm - izolacija 50/70 - postava gk 2 sloj - GK sa parmon br - gletanje vijaka i spojeva | <b>2</b>  | Priprema za žbukanje                                       |
| Drugi i even. treći sloj unutarnjeg gletanja  | <b>3</b>  | Žbukanje   |
| Unutarnje bojenje - Vanjska završna obrada  | <b>4</b>  | Sušenje žbuke  |
|   | <b>5</b>  | Sušenje žbuke  |
|   | <b>6</b>  | Nanošenje vanjske žbuke ,unutarnjeg temeljnog premaza      |
|   | <b>7</b>  | Sušenje  |
|   | <b>8</b>  | Završno bojenje unutarnje i vanjsko                        |
| <b>4 DANA</b>   |  | <b>8 DANA</b>  |

**BRŽA UGRADNJA  
BOLJA IZOLACIJA**

# SUSTAV AQUAFIRE® vs. KLASIČNA GRADNJA

## AQUAFIRE® SYSTEM vs. TRADITIONAL SYSTEM

### OUTDOOR CURTAIN WALL



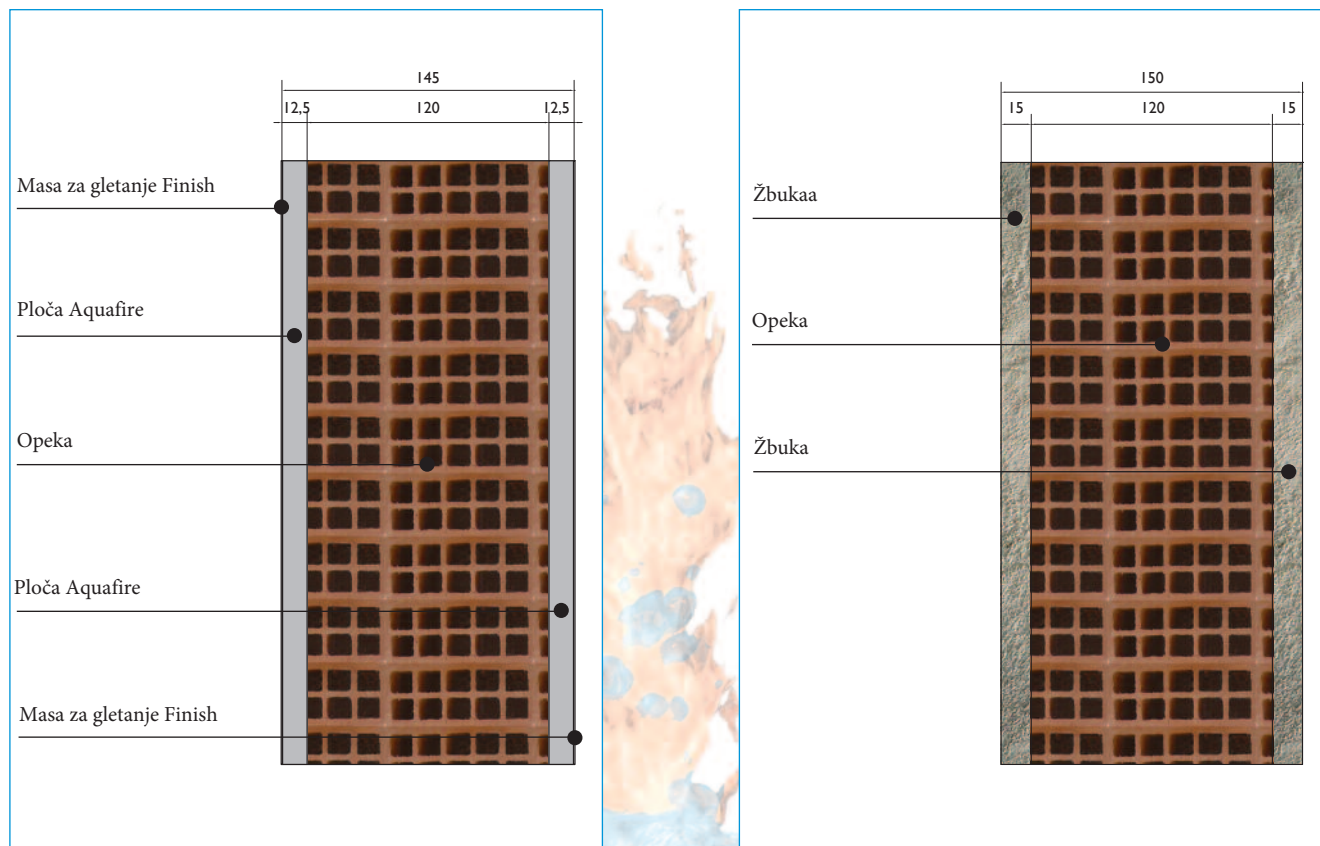
| 188mm  | THICKNESS | 300mm  |
|--|-----------|--|
| <b>0,249 W/m K</b>   | <b>U</b>  | <b>0,380 W/m K</b>   |
| Frame construction 75mm - Inst. Tyvek<br>inst. Aquafire boards - fill the joints   | <b>1</b>  | laying brick 12cm - inst. rock wool<br>laying brick 8cm      |
| external plastering - rock w.70/70 - inst. p.board 1° layer -<br>frame 50mm - rock w. 50/70 - p.board 2° layer - p.board<br>vapour barrier - fill the joints | <b>2</b>  | Creating slings plaster                                      |
| Second and third layer of internal plastering  | <b>3</b>  | Plastering   |
| External painting - external acrylic-siloxane finishing  | <b>4</b>  | Drying plaster   |
|  | <b>5</b>  | Drying plaster   |
|  | <b>6</b>  | Laying external plaster - Laying fixative of interior finish |
|  | <b>7</b>  | Drying   |
|  | <b>8</b>  | Internal and external painting                               |
| <b>4 DAYS</b>  |           | <b>8 DAYS</b>  |


**FASTER TO INSTALL**  
**MORE INSULATION**

# SUSTAV AQUAFIRE<sup>®</sup> vs. KLASIČNA GRADNJA

## AQUAFIRE<sup>®</sup> SYSTEM vs. TRADITIONAL SYSTEM

Zamjena za žbuku



| 145mm                                   | DEBLJINA  | 150mm  |
|---|---|--|
| <b>1,293 W/m K</b>                      | <b>U</b>  | <b>1,794 W/m K</b>                                     |
| Postava Aquafire - Ipuna spojeva Finish | 1   | Priprema za žbuku                                      |
| Gletanje zidova Finish                  | 2   | Žbukanje   |
| Bojenje                                 | 3   | Sušenje žbuke  |
|   | 4   | Sušenje žbuke  |
|   | 5   | Nanošenje vanjske žbuke i unutarnjeg temeljnog premaza |
|   | 6   | Nanošenje vanjske žbuke i unutarnjeg temeljnog premaza |
|   | 7   | Unutarnje i vanjsko bojenje                            |
| <b>3 DANA</b>                           |  | <b>7 DANA</b>  |

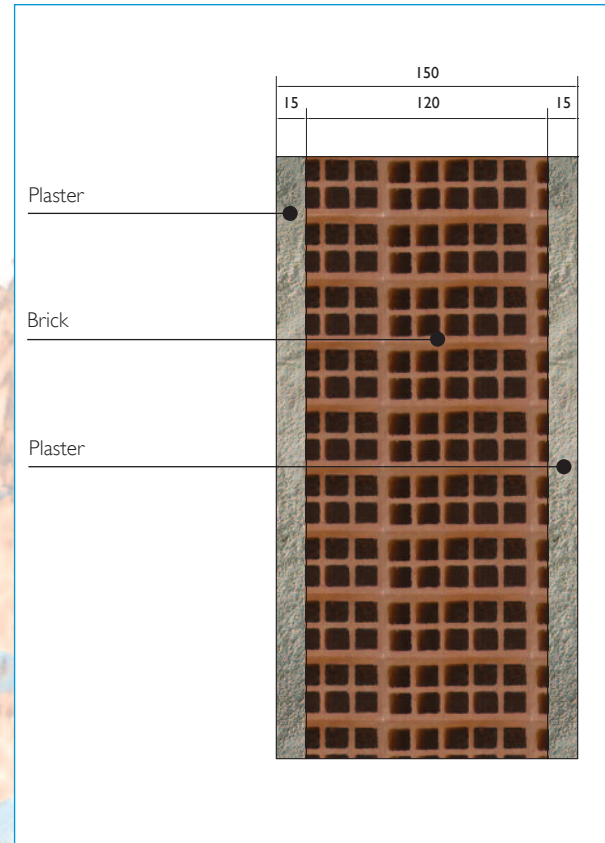
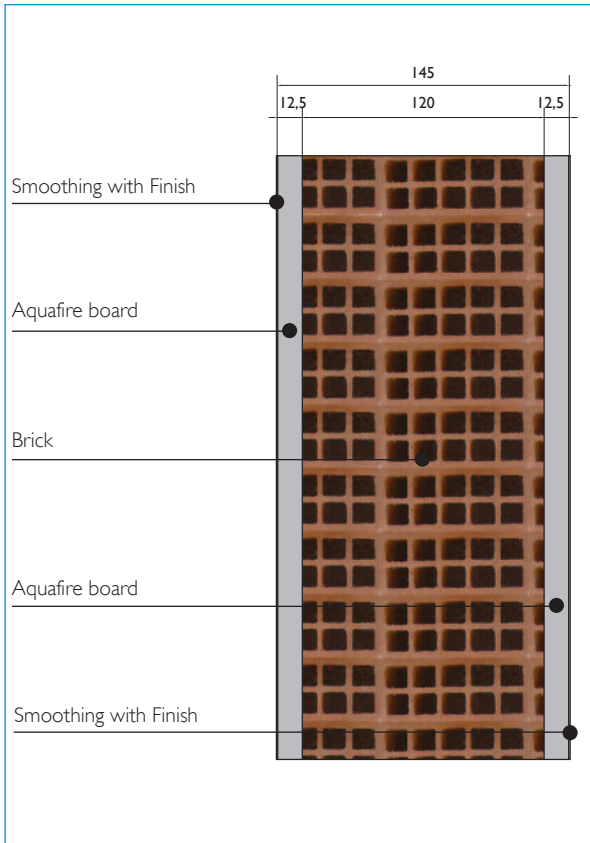
**BRZA UGRADNJA**



# SISTEMA AQUAFIRE® vs. SISTEMA TRADIZIONALE

## AQUAFIRE® SYSTEM vs. TRADITIONAL SYSTEM

### PLASTER REPLACEMENT



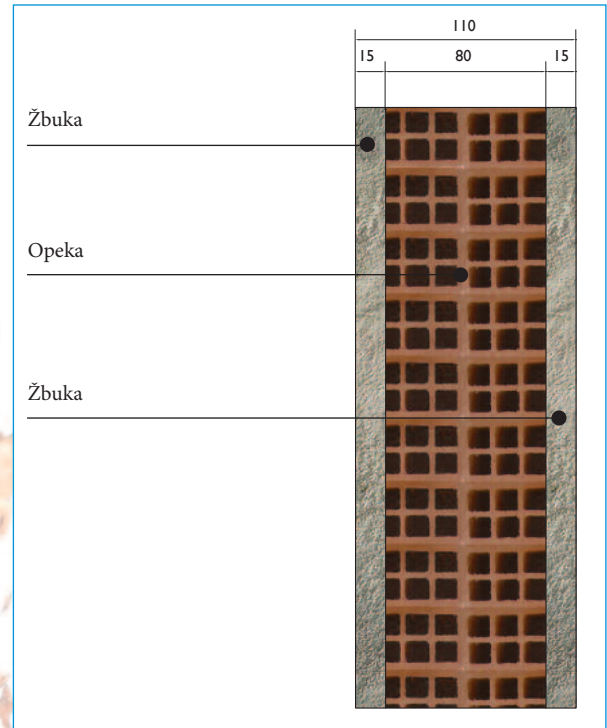
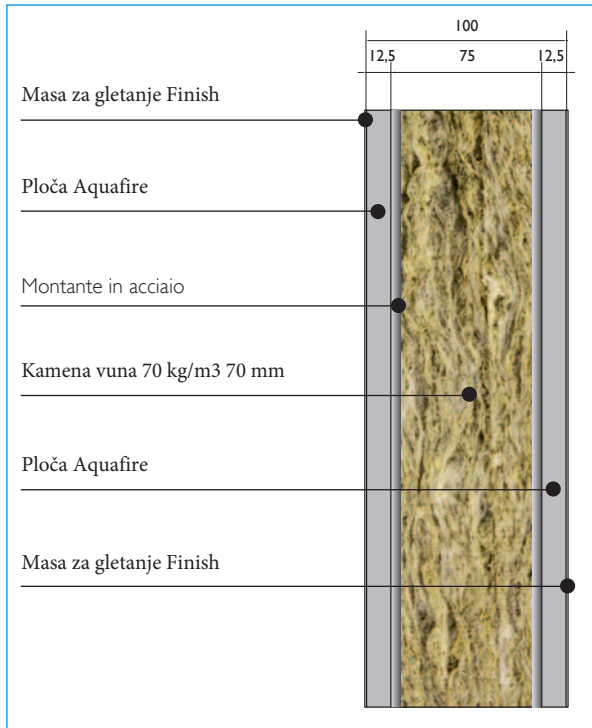
| 145mm   | THICKNESS | 150mm  |
|---|-----------|--|
| <b>1,293 W/m K</b>                                  | <b>U</b>  | <b>1,794 W/m K</b>   |
| Inst. Aquafire boards - fill the joints with Finish | 1         | Creating slings plaster  |
| Smoothing the boards with Finish                    | 2         | Plastering   |
| Painting  | 3         | Drying plaster   |
|   | 4         | Drying plaster   |
|   | 5         | Laying external plaster - installation fixative of interior finish |
|   | 6         | Laying external plaster - installation fixative of interior finish |
|   | 7         | Internal and external painting                                     |
| <b>3 DAYS</b>                                       |           | <b>7 DAYS</b>  |

**FASTER TO INSTALL**

# SUSTAV AQUAFIRE® vs. KLASIČNA GRADNJA

## AQUAFIRE® SYSTEM vs. TRADITIONAL SYSTEM

### Pregradni zid



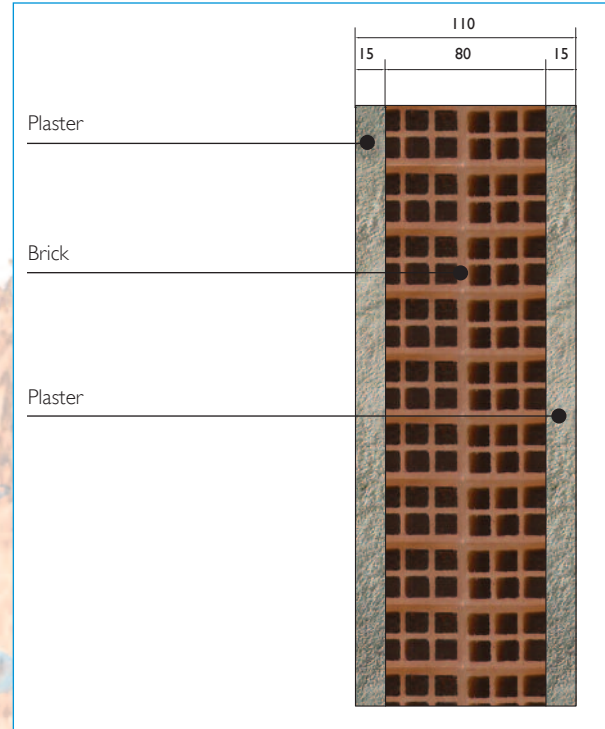
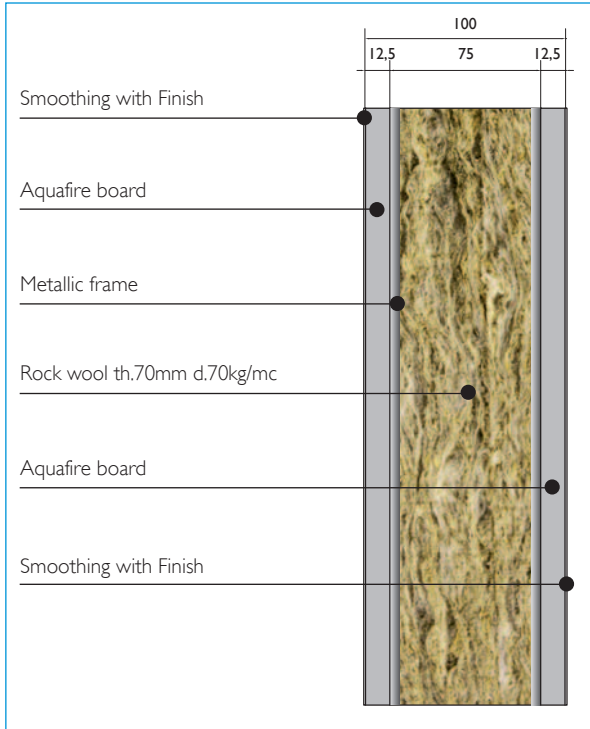
| 100mm  | DEBLJINA | 110mm  |
|--|----------|--|
| -  | <b>U</b> | -  |
| Izrada potkonstrukcije-provođenje instalacija-postava vune - polaganje Aquafire ploča - postava el. kutija - zapunjavanje spojeva i postava bandažne trake | <b>1</b> | Izrada zida iz opeke - priprema za žbukanje  |
| Gletanje površine masom Finish   | <b>2</b> | Izrada šliceva za instalacije - štemanje za el. kutije -postava el. kutija - krpanje šliceva |
| Bojenje  | <b>3</b> | Žbukanje   |
|  | <b>4</b> | Sušenje žbuke  |
|  | <b>5</b> | Sušenje žbuke  |
|  | <b>6</b> | Nanošenje temeljnog premaza na obe strane  |
|  | <b>7</b> | Sušenje temeljnog premaza  |
|  | <b>8</b> | Bojenje  |
| <b>3 DANA</b>  |          | <b>8 DANA</b>  |

**BRŽA UGRADNJA**

# SISTEMA AQUAFIRE® vs. SISTEMA TRADIZIONALE

## AQUAFIRE® SYSTEM vs. TRADITIONAL SYSTEM

### INDOOR WALL



| 100mm  | THICKNESS | 110mm  |
|--|-----------|--|
| -  | U         | -  |
| Inst. frame 75mm - corrug. electr. - inst. rock wool - inst. Aquafire - electr. box- fill the joints with Finish | 1         | Laying brick wall - Creating slings plaster  |
| Smoothing the boards with Finish   | 2         | Tracks electrical system - corrugated passage - installing electrical boxes - closing tracks |
| Painting   | 3         | Plastering   |
|  | 4         | Drying plaster   |
|  | 5         | Drying plaster   |
|  | 6         | Laying fixative of both faces  |
|  | 7         | Drying fixative  |
|  | 8         | Painting   |
| 3 DAYS   |           | 8 DAYS   |

**FASTER TO INSTALL**